



## Creating a New User Profile

### Contents

<b>1. INTRODUCTION</b>	<b>1</b>
<b>2. HOW TO CREATE A NEW PROFILE</b>	<b>1</b>

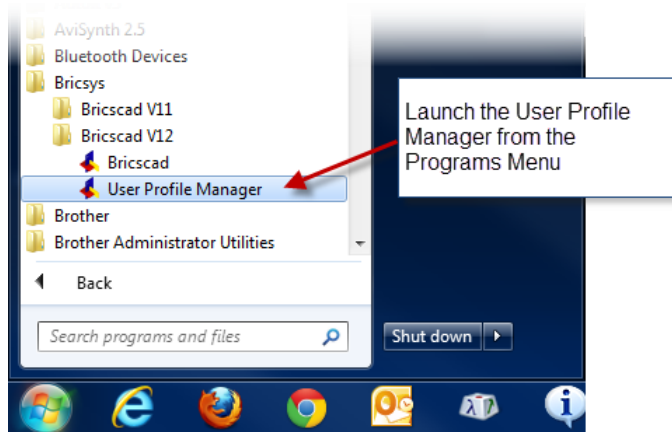


## 1. Introduction

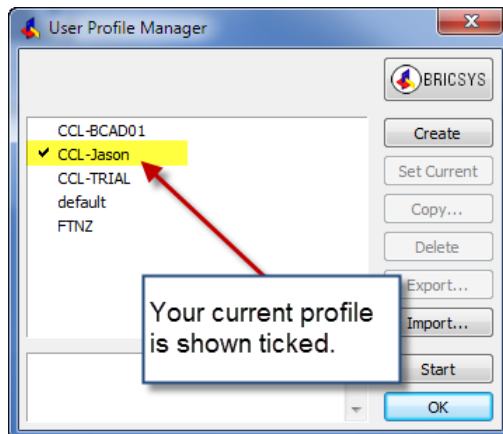
There will be times when Bricscad may act strangely, or you have changed a setting that stops Bricscad from working. In these situations, creating a new user profile can be useful to reset your user settings to their defaults.

## 2. How to create a new profile

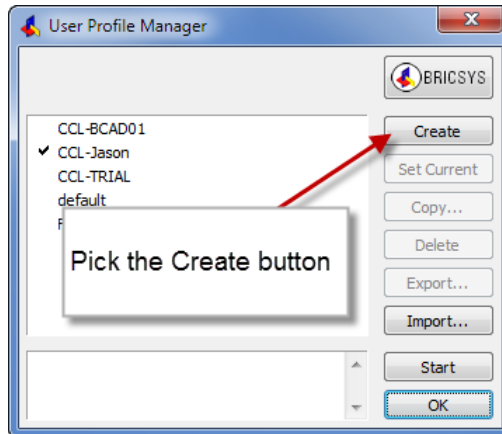
1. Shutdown Bricscad if it is running.
2. Launch the User Profile Manager from the Start Menu.  
Start->Programs->Bricsys->Bricscad V12



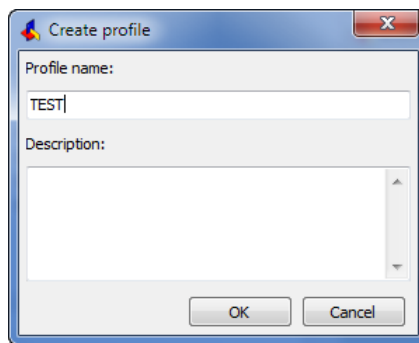
3. This launches the User Profile Manager. You may see several profiles listed. The one that has a tick beside it is your current profile.



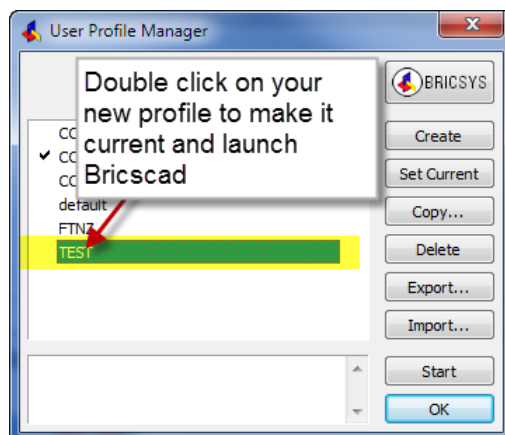
- Pick the create button to create a new profile



- Enter a profile name and pick the ok button to create a new profile.



- Select the new profile you have created, then double click to make it the current profile and to launch Bricscad.



- This will now be the default profile used by Bricscad. Run the user profile manager again to change.