



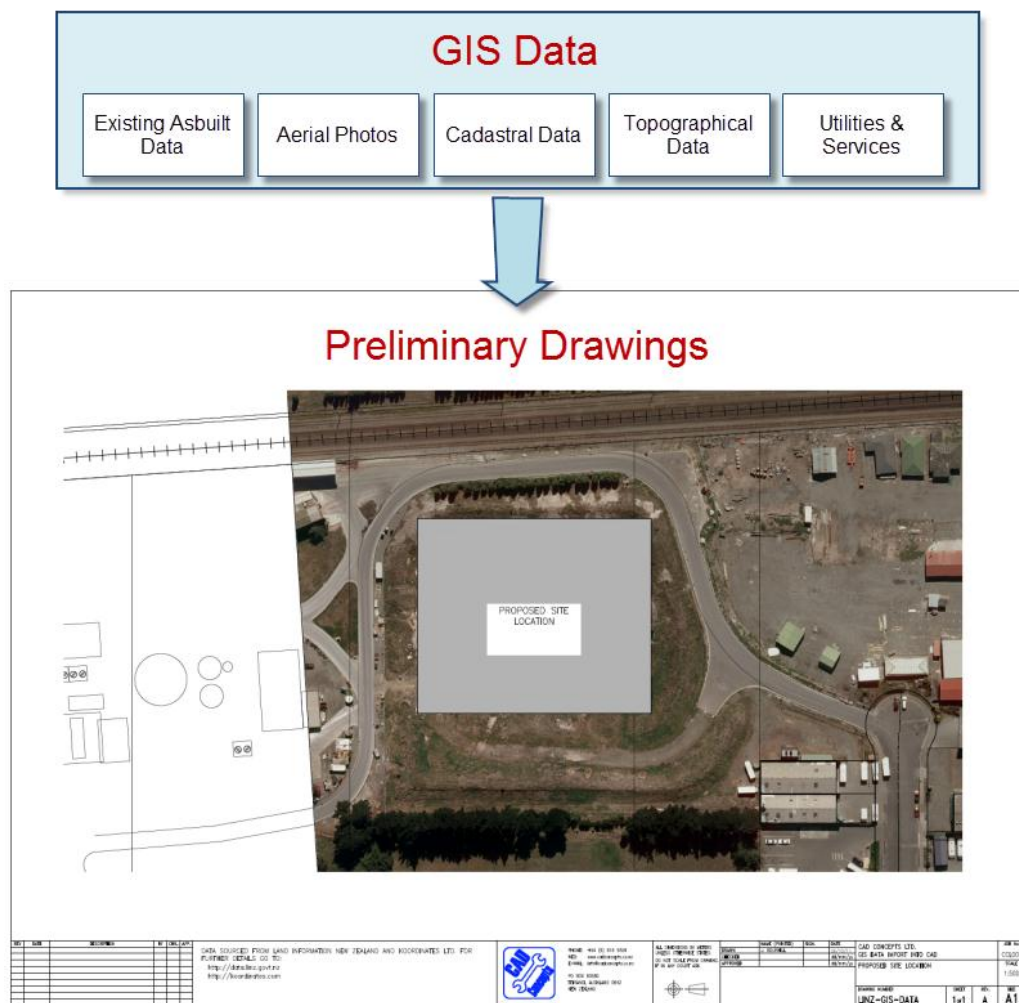
Enjoy the Freedom of GIS

Contents

<u>1.</u>	<u>INTRODUCTION</u>	<u>1</u>
<u>2.</u>	<u>DATA SOURCES</u>	<u>2</u>
<u>3.</u>	<u>GIS EXAMPLES</u>	<u>3</u>

1. Introduction

The preliminary and proposal stages of projects can present a number of challenges to those involved. The amount of information available is often scant, and unverifiable in terms of accuracy. It is also not unusual for the Client to have little or no existing information in the site in question. Yet somehow you need to present to the Client a coherent and clear plan on how they could best proceed to meet their requirements. This situation is exacerbated further when the site in question is remote, or difficult to access. It is here that the access to GIS data is real advantage, even more so when a large amount of this information can now be found for FREE.

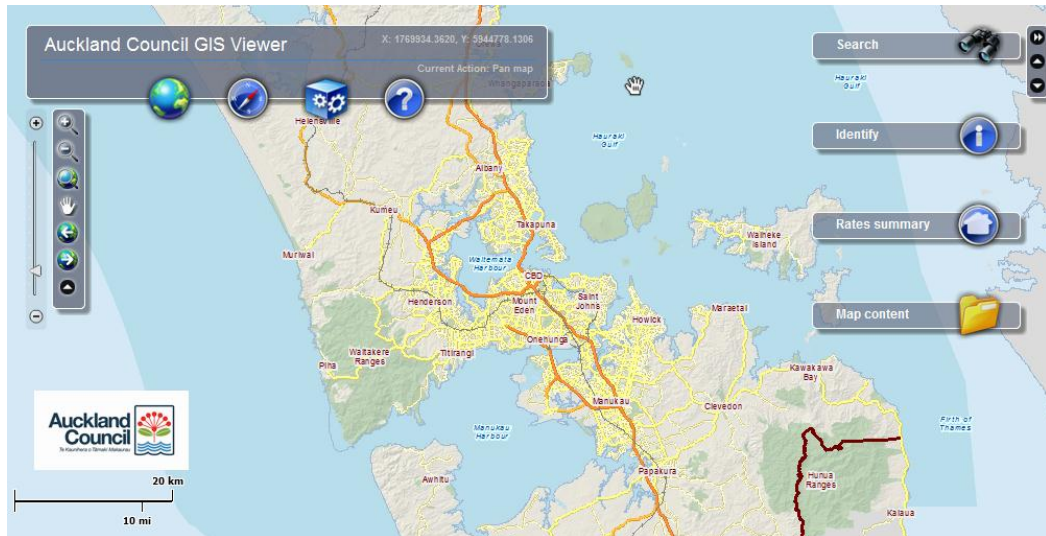


1. GIS Data allows Preliminary and Proposal Drawings to be prepared quickly

2. Data Sources

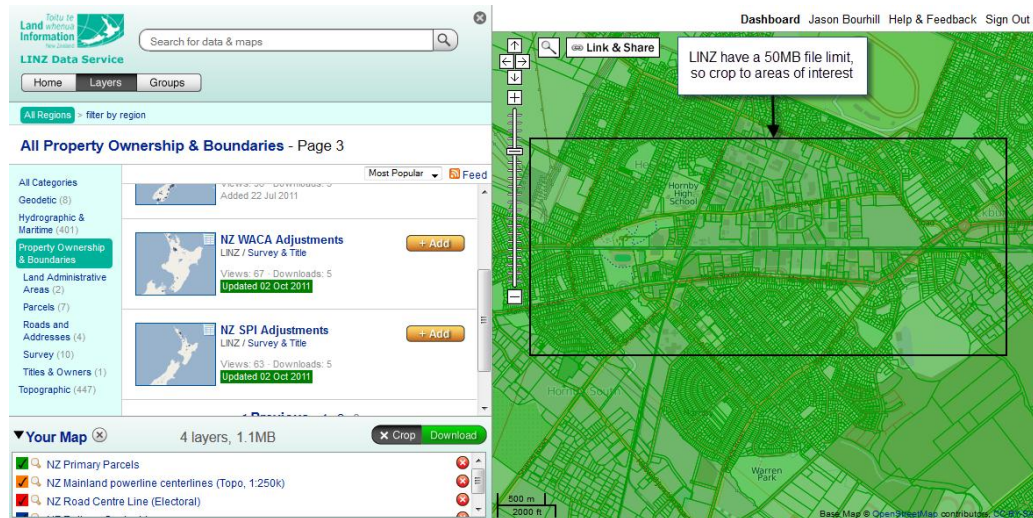
Looking for GIS data? Then try the following sites:

[Auckland Council GIS Viewer service](#). The site has recently included the ability to extract data from the viewer in DXF format. Provides access to Aerial photos, Contour profiles, Parcel boundaries, Underground services, and more for the Auckland region.



2. Welcome to the Super City

[LINZ Data Service](#), from Land Information New Zealand. Provides Topographical, Cadastral, Hydrographic data, along with details on services and utilities. LINZ data also covers outlying Islands and territories.



3. LINZ provides a huge amount of Geodata on its site

The screenshot shows the koordinates website interface. On the left, a sidebar lists categories like 'Aerial & Satellite Photos', 'Infrared Imagery', 'Orthophotography', 'Tie Extents', 'Boundaries & Administration', 'Cadastral & Property', 'Contours & Terrain', and 'Miscellaneous'. The main area displays a list of photos. A red arrow points from a text box to the first photo, 'Christchurch Post-Earthquake Aerial Photos (24 Feb 2011)'. Another text box with an arrow points to a specific area within the photo's thumbnail. On the right, a larger view of the selected photo is shown, with a black rectangle highlighting the same area of interest. A text box explains that aerial photos can be very large and need to be cropped to the area of interest. The bottom of the interface shows a map layer selection bar with 'Your Map' and '1 layer, 10MB, Free'.

koordinates Data & Maps Address

Search for data & maps

Home Layers Collections Upload

All Regions filter by region

All Aerial & Satellite Photos

All Categories Most Popular Feed

- Aerial & Satellite Photos**
 - Infrared Imagery** (4)
 - Orthophotography** (50)
 - Tie Extents** (5)
 - Boundaries & Administration** (102)
 - Cadastral & Property** (29)
 - Contours & Terrain** (73)
 - Miscellaneous**

0.100m **Christchurch Post-Earthquake Aerial Photos (24 Feb 2011)** **Remove**
Land Information New Zealand
Views: 56942 Downloads: 1881
Updated 22 Aug 2011 20

0.750m **Northland Aerial Photography Acquisition** **Add**
Northland Regional Council
Views: 2793 Downloads: 172
Added 04 Aug 2009

0.750m **Northland Aerial Photography -** \$0.03 to

Your Map 1 layer, 10MB, Free Crop Download or Order

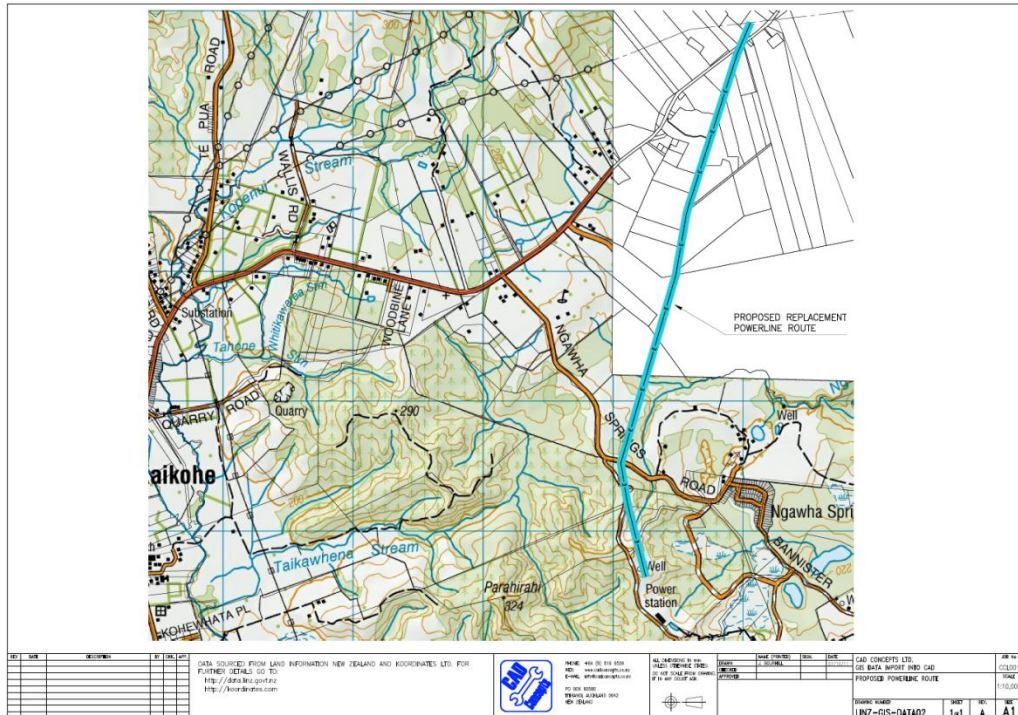
Christchurch Post-Earthquake Aerial Photos (24 Feb 2011) \$0.00

Aerial photos can be very large, so crop to the area of interest

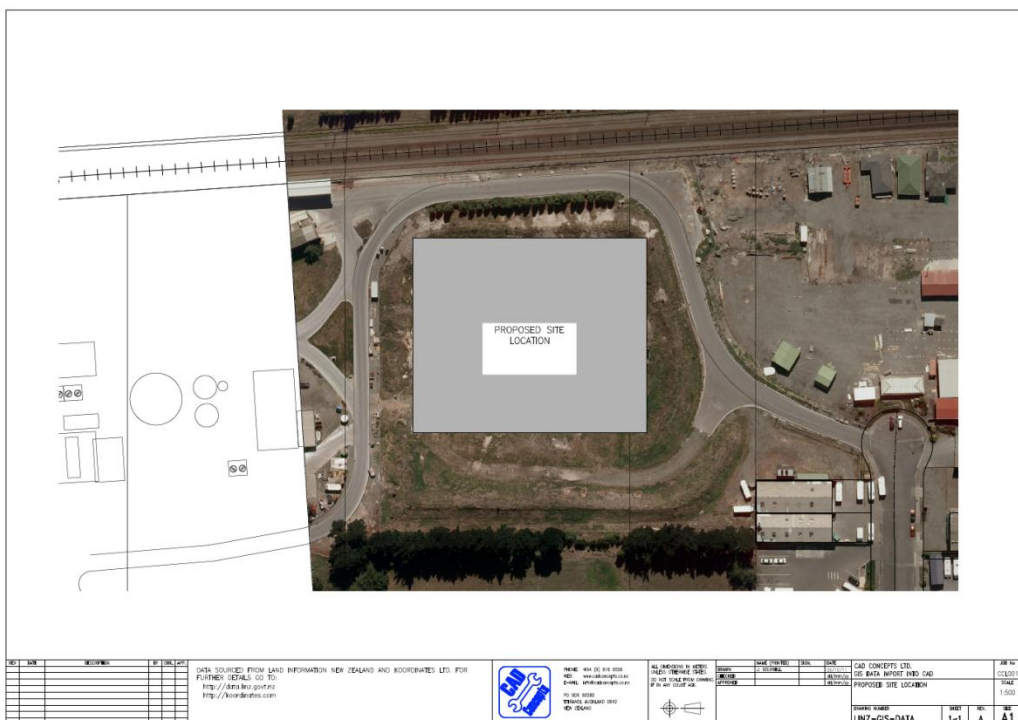
3. GIS Examples

[illegible]

3



6. Have a Proposal to Prepare?



7. In the Preliminary Stages of Planning?